





Workshop for manufacturing frame-and-panel houses, glued laminated timber and planed timber of RUE Zavod Gazetnoi Bumagi was set up in 2009 under public investment support.

Today it is a dynamically developing company of modern wooden house construction in the Republic of Belarus.

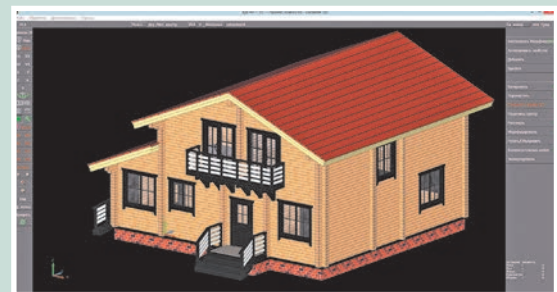
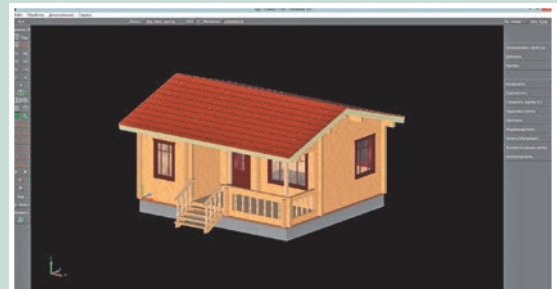
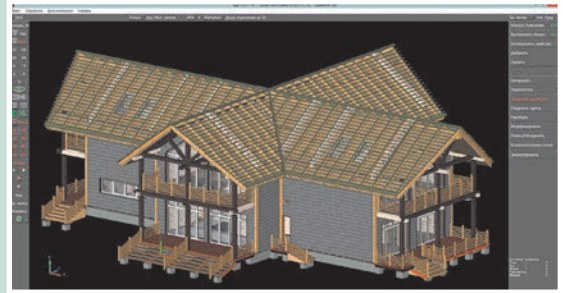
The most advanced German technologies and equipment of leading manufacturers, such as Weinmann, Hundegger, HOMAG, Cathild, Ledinek, are used in production, which results in manufacturing good quality products meeting modern requirements:

- frame-and-panel houses;
- houses from glued laminated timber;
- profiled pieces from softwood for construction;
- sawn softwood, grades I–IV.

The potential of the company allows carrying out large-scale projects in all directions of production within a short timeframe.

High quality, short manufacturing time, environmental compatibility, low energy losses are the main advantages of houses, manufactured by RUE Zavod Gazetnoy Bumagi. From 2009 to 2016, 942 houses were manufactured and erected.

Computer-aided technological process



Modern technological process unites all stages of production in a single electronic control system.

The design of a house is developed by using unique German software CadWork that 'knows' everything about specific features of wooden house construction and is integrated with the process equipment of the company.

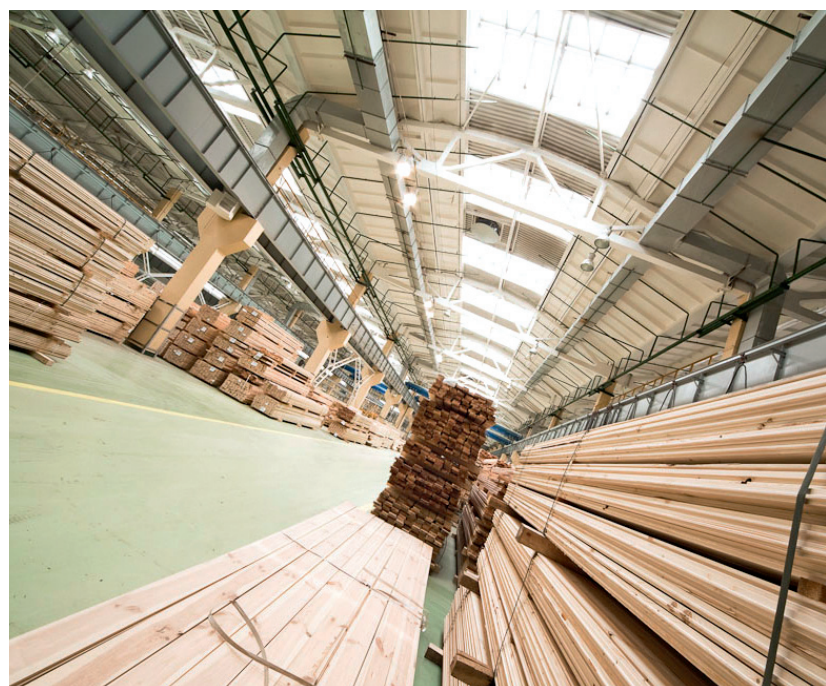
The software automatically optimizes and calculates material consumption, quickly creating an accurate estimate.



Sawmill

At this facility logs are cut into pieces. Computerized sawmill with laser marking guarantees high accuracy of sawing.

A full cycle of sawn-timber processing is organized by the company: from sawing timber to obtaining finished products. All stages of the manufacturing process undergo continuous quality control.



Planed timber workshop

produces profiled pieces from softwood for construction, which meet the specifications of TU BY 790282162.003:

- floorboards,
- block house,
- siding,
- faux log siding,
- faux log block house,
- planed planks,
- terrace planks.

The drying process of sawn timber is carried out in kilns to a moisture content of $\pm 12\%$.

With frame-and-panel house construction,

house elements (wall panels, floor panels, pediments) are delivered to the construction site ready for installation.

A frame is assembled and all the elements of the construction are fit together on the company's premises on automatic machines from German manufacture Weinmann.

In addition, a high degree of prefabrication allows minimizing the interior finish costs.

There are no 'dirty and wet' operations; the walls do not need additional smoothing, since they are already sheathed with OSB.

In other words, the degree of the wall panel prefabrication is directly connected with the qualitative characteristics of the future house.

One of the most important conditions for high quality of the future house is the use of planed sawn timber with normalized moisture content of $12 \pm 3\%$.

Another advantage is the use of joined planks with relieved stresses for better rigidity of the frame. Frame panel houses are in demand not only in the Belarusian and Russian markets; they are supplied to France, where they are used as dwelling houses, exhibition pavilions, small houses, kindergartens.

Export orientation has acted as an incentive for modernization.





Frame Panel House Production Line



Design program files are also control files of our machines.

Such integration radically accelerates the start of the house project production. It generally takes no longer than a month and a half to complete the entire process of getting a design and shipping a prefabricated house kit.



Rapid rearrangement of production helps create architectural forms with different degrees of complexity for individual projects.

What do we produce?



Glued laminated timber workshop

produces various types of timber pieces according to the specifications TU BY 790282162.004:

planed timber

50–600x75–200 (h) mm,
50–350x200–300 (h) mm,
50–300x200–600 (h) mm;

profiled timber

80–300x140–250 (h) mm.

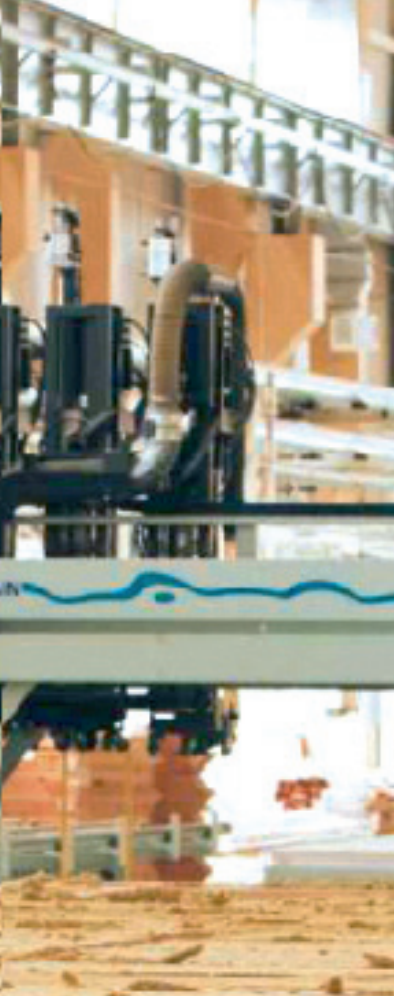
Timber of other sections can be produced as well.
The maximum length of a timber piece is 18 meters.

Depending on the complexity of designs we can make 5–8 house kits from glued laminated timber per month.



Frame-and-Panel House Construction Line





The frame-and-panel house construction line

is the heart of the company.

Ready-to-install timber frame panels are manufactured here.

Batch production capacity is 2000 m² of housing per month.

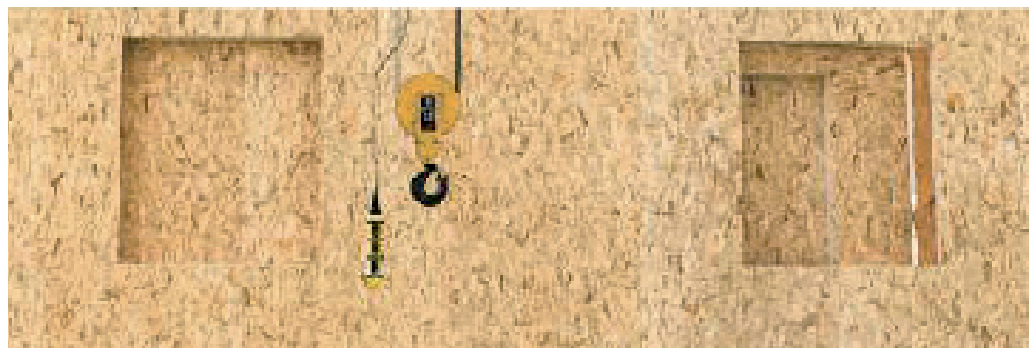
A finished house kit includes everything you need to erect it:

a kit of ready-to-install prefabricated walls and floor structures; window and door units; internal and external cladding materials; floorboards; a roof supporting structure; a complete kit of metalware.

The use of modern thermal insulation materials provides resistance to heat transfer of the building envelope of not less than 6.11 m² °C/W.



Fully automated
WEINMANN line
(Germany)



Standard Designs

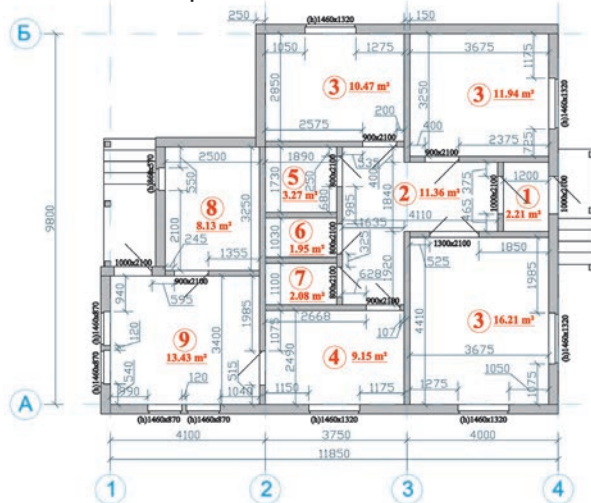
Aleksandriya



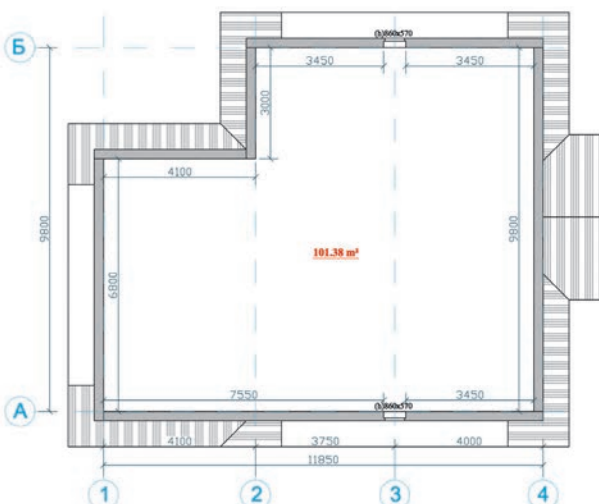
*Frame-and-panel house,
B. 181-00 design*

Single storey single family three-room dwelling house with 251 mm thick wooden external frame walls and with the possibility of the attic floor.

Ground floor plan



Attic plan

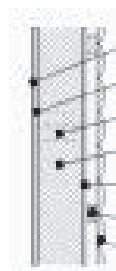


1. Entrancewa 2,21 m²
2. Mudroom..... 11,36 m²
3. Living room 16,21 m²
Living room 11,94 m²
Living room 10,47 m²
4. Kitchen..... 9,15 m²
5. Bathroom..... 3,27 m²
6. Toilet 1,95 m²
7. Storeroom..... 2,08 m²
8. Boiler room..... 8,13 m²
9. Veranda..... 13,43 m²



A house wall comprise the following

- Gypsum board 12 mm
- OSB 12 mm
- Timber ;piece 150x45 (wall frame)
- Mineral wool insulation
- OSB 15 mm
- Block 35x55
- Block house 27 mm



Kochanov

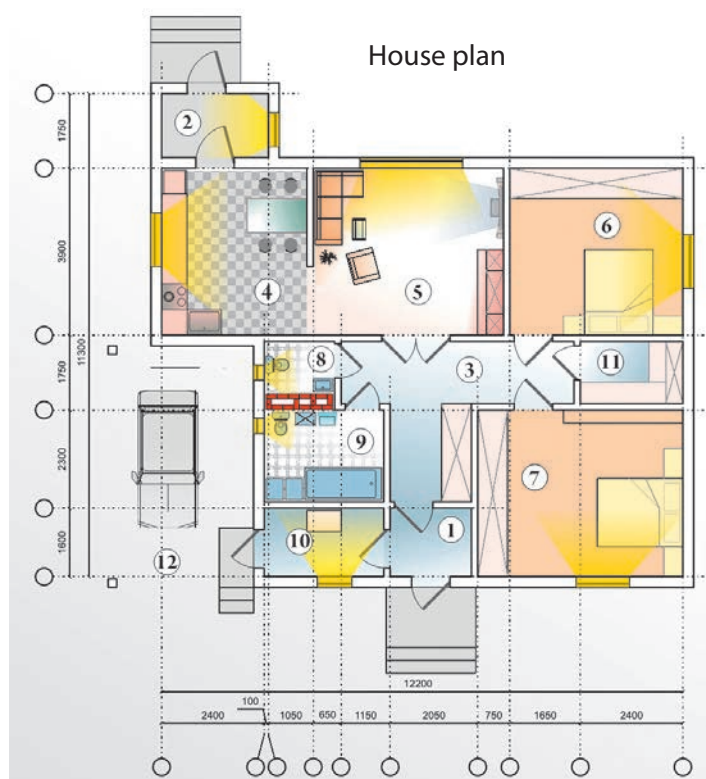


Single storey single family two-room dwelling house.
Frame-and-panel walls,
national standard STB 939–93 wooden windows,
national standard STB 138–89 wooden doors,
plank flooring,
an attic roof.

Frame-and-panel house, KD 03.01-11 design

- 1. Entranceway 3,04 m²
- 2. Entranceway 3,75 m²
- 3. Mudroom 12,28 m²
- 4. Kitchen 13,26 m²
- 5. Sitting room 17,36 m²
- 6. Bedroom 15,8 m²
- 7. Bedroom 18,72 m²
- 8. Toilet 2,39 m²
- 9. Bathroom 6,02 m²
- 10. Heating room 4,48 m²
- 11. Storeroom 3,48 m²
- 12. Carport

Total floor area 101,28 m²
Living area 51,88 m²



Rainbow



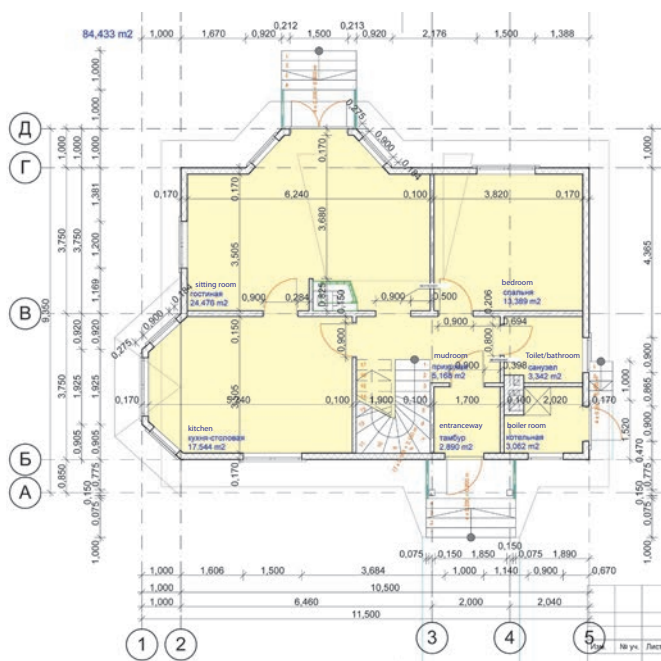
Frame-and-panel house,
KD 07.1-12 design

Two-storey single family
two-room dwelling house.

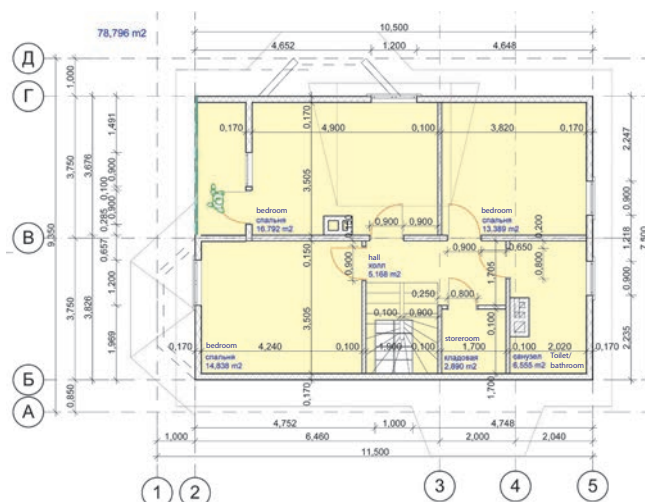
Total floor area.....171,76 m²

Living area.....115 m²

Ground floor plan



First floor plan



Svetlana

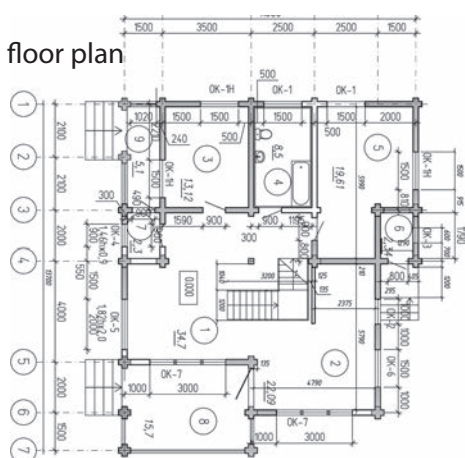


BD 04.1-11 design

Two-storey single family four-room dwelling house made of glued laminated timber with an area of 160 m²

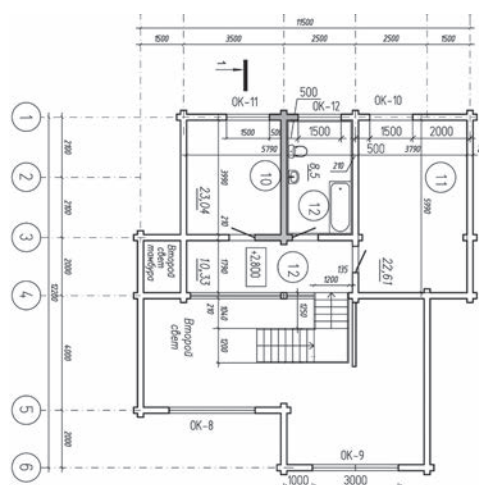


Ground floor plan



- | | |
|------------------------|----------------------|
| 1. hall | 34,7 m ² |
| 2. kitchen/dining room | 22,09 m ² |
| 3. Living room | 13,12 m ² |
| 4. Bathroom | 8,5 m ² |
| 5. Living room | 19,61 m ² |
| 6. Boiler room | 2,34 m ² |
| 7. Entranceway | 2,3 m ² |
| 8. Terrace | 15,7 m ² |
| 9. Terrace | 5,1 m ² |

First floor plan



- | | |
|-----------------|----------------------|
| 10. Living room | 23,04 m ² |
| 11. Living room | 22,61 m ² |
| 12. Bathroom | 8,5 m ² |
| 13. Corridor | 10,53 m ² |
| Living area | 140 m ² |

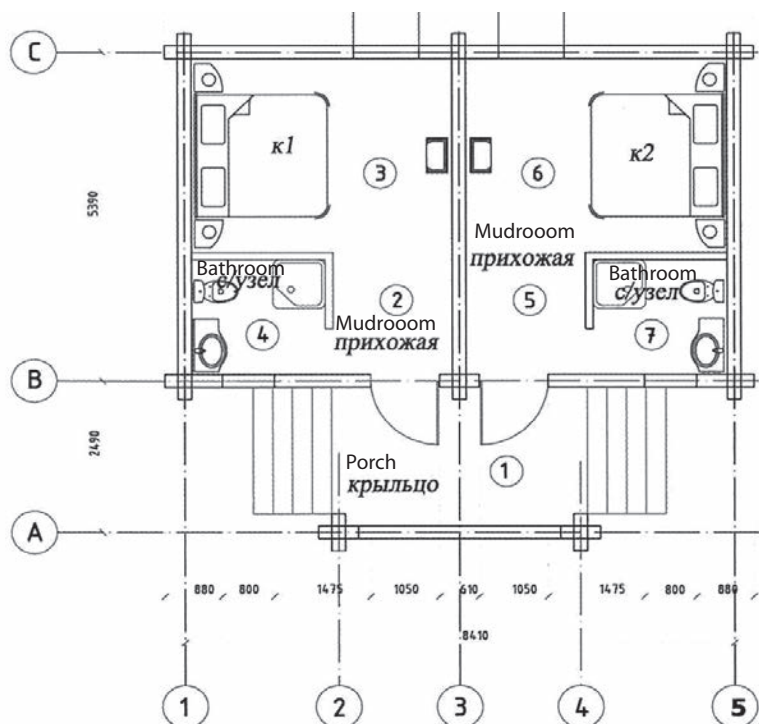
Viking



*House made of glued laminated timber,
BD 14.1-11 design*

Single storey single family
two-room dwelling house.

House plan



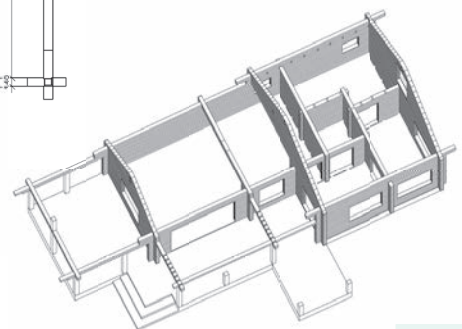
1. Porch.....	8,1 m ²
2. Mudroom	3,7 m ²
3. Room	12,65 m ²
4. Bathroom	3,85 m ²
5. Mudroom	3,7 m ²
6. Room	12,65 m ²
7. Bathroom	3,85 m ²

Total floor area 62,83 m²
Living area 58,7 m²

Bathhouse

A photograph of a small, single-story wooden bathhouse. The building is constructed of light-colored horizontal wooden siding. It features a steep, dark grey gabled roof. On the left side, there is a covered porch with a wooden railing that has a lattice pattern. The porch is supported by wooden posts. The bathhouse has three windows with white frames: two are double-hung windows and one is a smaller, single-hung window. The building is situated on a snowy ground, and a portion of another building is visible in the background.

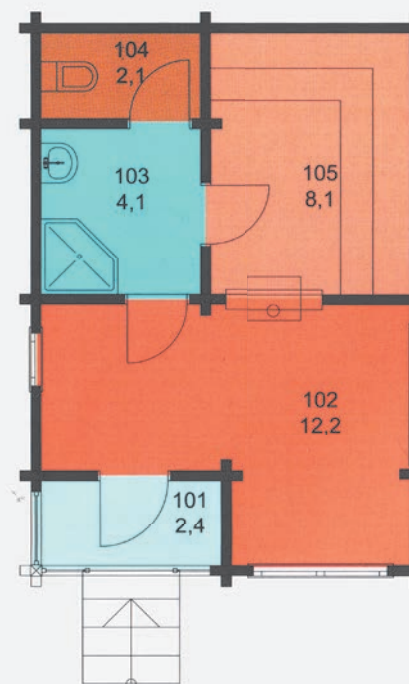
A 3D architectural rendering of a log cabin. The cabin features a dark, shingled roof with multiple gables. The exterior walls are clad in light-colored horizontal siding. A prominent covered porch runs along the front and side, supported by wooden posts and enclosed by railings with a decorative lattice pattern. The cabin is set on a grey foundation, and the background shows a snowy landscape under a blue sky.



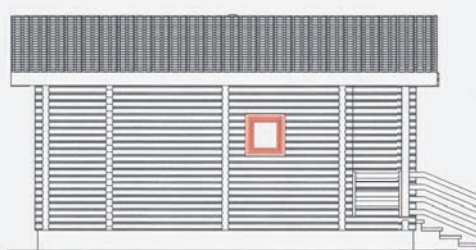
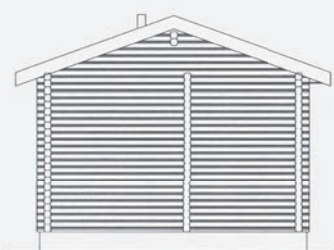
Bathhouse



Bathhouse plan



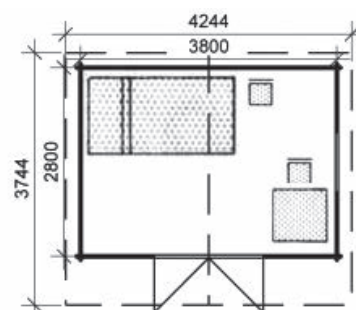
101. Porch	2,4 m ²
102. Relaxation room	12,2 m ²
103. Shower room	4,1 m ²
104. Toilet	2,1 m ²
105. Steam room	8,1 m ²
Total floor area	28,6 m ²



Elena



A small summer house can be used as a children's playhouse, a cozy gazebo, a practical outbuilding, etc.



Gazebos



MAF-1.12 (2 500*3 000)



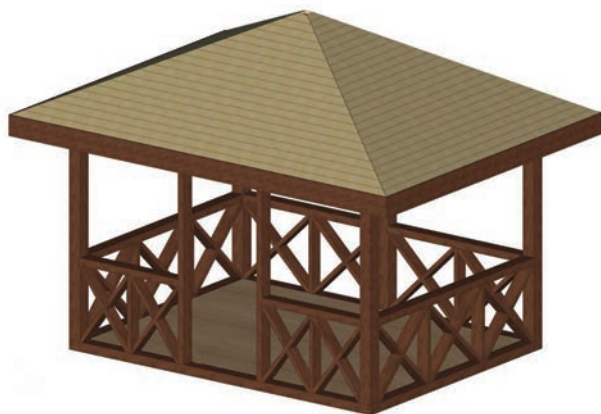
MAF-2.12 (4 000*5 000)



MAF-5.12 (4 000*8 500)



MAF-6.12 (4 000*8 500)



MAF-7.12 (3 000*4 000)



MAF-8.12 (6 000*3 000)

Planed timber workshop

produces profiled pieces from softwood for construction with a moisture content of $\pm 12\%$, which meet the specifications TU BY 790282162.003



Floorboard

27*100*3750/4000/5750/6000

Quality grades A, B, C



Faux log siding

19*135*3750/4000/5750/6000

Quality grades A, B, C

The capacity of the planed timber workshop is up to 2000 m³ of softwood profiled pieces per month.



Block house

27*140*3750/4000/5750/6000

Block house

21*90*3750/4000/5750/6000

Quality grades A, B, C



Siding

16*91*3750/4000/5750/6000

Quality grades A, B, C



21RUE Zavod Gazetnoi Bumagi
213010, Mogilev region, Shklov,
1-st Zavodskaya Street, 9
Tel./fax: + 375-2239-71-843
Tel.: + 375-29-352-25-20
E-mail: ptozgb@domostroenie.by
www.domostroenie.by



We build
Belarus